



TOUR TITLE: *Europe Classic - Sept 17-29, 2010*

OF DAYS: *13 Days & 12 Nights*

WEB LOCATION: <http://www.bethelcoachtours.com/ITIN-europe-classic.htm>

Friday

Depart for Frankfurt from USA

Saturday

Arrive Frankfurt, Germany. Frankfurt: Roemerberg, Sachsenhausen

Sunday

Frankfurt: Goethe's House (self guided)
Duesseldorf, Germany, Emmen, Netherlands

Monday

Branch tour Emmen, Netherlands. Zaanse Schans,
Canal ride in Amsterdam, Brussels, Belgium

Tuesday

Tour Branch Kraainem Belgium. Tour Plantin-Moretus Museum in
Antwerp, Belgium, Free afternoon and evening in Brussels, Belgium

Wednesday

Tour in Luxemburg. Train ride / Boat ride / Shop / Wine Tasting
on the Moselle River

Thursday

Lunch in Strasbourg, France. Check into Hotel in Thun, Switzerland

Friday

Branch tour in Thun, Free day in Interlaken and Thun

Saturday

Montreux: Le Chateau Chillon Tour
Lunch around Montreux, ride through the Swiss Alps

Sunday

Lunch Lindau Island, Explore Rothenburg ob der Tauber Germany

Monday

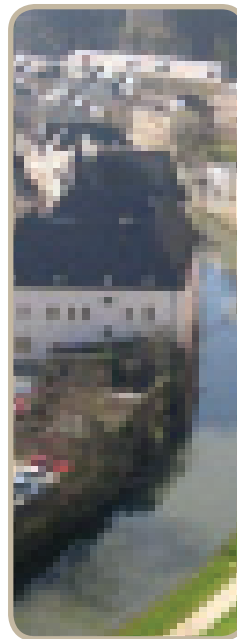
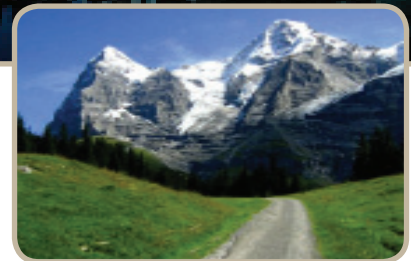
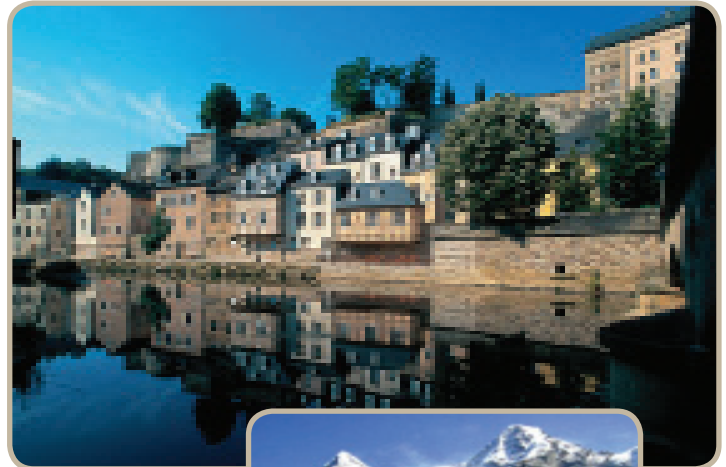
Day in Rothenburg

Tuesday

Leave Rothenburg. Tour Selters Branch, Germany. Frankfurt,
Germany

Wednesday

Depart Frankfurt



**Prices Per Person
(From the Continental U.S.):**

| | |
|--------------|--------|
| 3 to a room: | \$3145 |
| 2 to a room: | \$3225 |
| 1 to a room: | \$3625 |

Add-on prices start at \$720 per person, based on double occupancy. This add-on is an additional 4 days and 3 nights and is NOT guided by a BCT tour guide.

What's Included:

- + Canal Cruise, Amsterdam, Netherlands
- + Tour Plantin-Moretus Museum, Antwerp, Belgium
- + Train ride/boat ride on river Moselle & Wine Tasting, Luxembourg
- + Tour Castle Chillon, Montreux, Switzerland
- + Round trip airfare out of airport near you, airport taxes
- + Services of a professional tour guide from arrival to departure.
- + Private deluxe air-conditioned motor coach when touring
- + Requested accommodations w/private bath or shower & hotel taxes.
- + Daily breakfast.

Day 14

Arrive Target City by Train or Plane

Day 15

Playtime: Target City

Day 16

Explore Target City

Day 17

Depart Target City by Train or Plane

OPTIONAL: Add London, Paris, Athens, Madrid or Vienna at the beginning or to the end of your tour:

Römerberg: The historic heart of the city where you can shop, eat and soak in the historic atmosphere of the city. Sachsenhausen: City suburb south of the Main with traditional Apfelwein (cider) bars. Goethe's House: Birth place of Germany's greatest poet.

Amsterdam is world famous for its four rings of canals round the oldest part of the city, its 1281 bridges and hundreds of 17th century houses lining the boat filled waterways.

The Plantin-Moretus Museum in Antwerp, Belgium, stems from the most important printer-publisher in the second half of the sixteenth century. A Guttenberg Bible, the oldest printing presses in the world, and well preserved record of sixteenth century domestic and commercial life make this museum with its thirty-four rooms well worth a visit. One of the most beautiful printed books preceding 1501 (incunables or cradle books) is without doubt the 36-lined Gutenberg Bible, made with the letter material of the book printing inventor. Post-incunables (books from between 1501 - 1540) are also amply represented.

Brussels is known as the capital of Europe because it has become synonymous with the project to unite the continent. Shopping around the Grand' Place will be some of the best of the entire trip. Fashionable shops with good prices. The ornate Baroque guild houses with their burnished facades were completed in 1695. The end result of Louis XIV's folly is Europe's most sumptuous market square.

The branch at Luxembourg is the smallest we will visit, which in its own way, makes it very special. The branch is manned by four very hospitable brothers and sisters at the branch, who are happy to show us their home. Luxembourg has always occupied a prime position on the map of international politics. From 1443 until 1839 it suffered no fewer than six foreign occupations, transforming Luxembourg into one of the most important fortifications in the world. Therefore, the scenery of both the country and city of Luxembourg is rich which historical castles, churches, bridges and fortresses.

Thun and Interlaken, two beautiful gateways to the Alps, sit on opposite ends of Thun lake. Thun features an unspoiled old town with fine buildings, attractive squares, and "double-decker" shops plus a world-famous castle and the Schadau Park. The mountains are so close you can almost touch them.

The Castle of Chillon sits on a solid rock island jutting out into lake Geneva. It was here that Lord Byron wrote his famous romantic poem "The Prisoner of Chillon." The original surrounding wall of the castle was built before the 11th century. Inside the walls are three courtyards surrounded by the moat bridge entrance (originally a drawbridge), military quarters, cannon rooms, long loopholes for archers, dungeons and underground vaults. Its history is rich and well preserved.

Montreux has long been considered the diamond of the Swiss Riviera. You will find palm trees, balm weather, and flowering camellias alongside Lake Geneva. Experience a spectacular view of Lake Geneva by riding on the



Available Upgrades:

Add London, Paris, Athens, Madrid and Vienna to this itinerary! See below the 'day by day itinerary' on the front page for details!



cable railway to Caux and the Rochers de Naye or take a 45 minute boat ride out on the lake and experience the breathtaking view of the Alps that tower above.

Rothenburg is the "medieval capital" of Germany. A walk through Rothenburg is just like a time tunnel. Not only stately towers, massive fortifications and patrician houses but also the historical festivals will bring you closer to the spirit of the middle ages. And there is no doubt that there is also a spirit of hospitality in this town.



Become a BCT Trip Partner and save BIG on your tour - you could even travel for FREE. Interested? Visit our website for details:

<http://www.bethelcoachtours.com/trip-partners.htm>

NOTICE: A deposit of \$350 per person is required at the time you make your reservation to ensure your space on the tour. Refunds are possible only to those who purchase travel insurance, provided cancellation conditions are met.

<http://www.bethelcoachtours.com/insurance-overview.htm>

This itinerary is subject to change.



Bethel Coach Tours
PO Box 2888
Alamogordo NM 88311
Phone: 575-434-3944

Web: <http://www.bethelcoachtours.com>

TIP:

Book your tour online! It's fast, easy and will save you **\$25** on your reservation!